



# TARGETER WINGS

## KENYA JUNIOR SCHOOL EDUCATION ASSESSMENT

### GRADE 9 - 2026



Candidate's Name	
School Name	
Candidate's Signature	

Assessment Number	
School Code	
Date	

KJSEA  
911/2

## CREATIVE ARTS AND SPORTS (Theory)

Paper 2  
TIME:1 Hour 40 Minutes

### INSTRUCTIONS TO CANDIDATES

- Write your name and assessment number in the spaces provided above.
- Write the name and code of your school in the spaces provided above.
- Put your signature and write the date of the assessment in the spaces provided above.
- This paper consists of two sections A and B.
- Each section has THREE parts: Part I - Performing Arts, Part II - Sports, Part III - Visual Arts.
- Section A comprises Multiple Choice Questions number: 1 to 40.
- Section B comprises short structured and analysis questions number: 41 to 59.
- Answer ALL the questions in section A on the separate answer sheet provided.
- Answer ALL the questions in section B in the spaces provided on this question paper for

#### Part I - Performing Arts and Part II - Visual Arts.

- For Part III - Sports, questions 47 to 50 are COMPULSORY. Choose EITHER question 51 or 52.
- Do not remove any page from this question paper.
- Answer all questions in English.

For official use only

#### SECTION B

Question Number	41	42	43	44	45	46	47	48	49	50	51	52	53	54	55	56	57	58	59
Maximum score	3	3	4	5	5	2	4	2	3	3	9	9	2	4	1	3	2	2	3
Candidate's Score																			

#### SECTION A: MULTIPLE CHOICE QUESTIONS (40 Marks)

Read the instructions carefully.

- You have been given this question paper and an answer sheet. This section of the question paper consists of 40 multiple-choice questions.
- Answer ALL questions on the answer sheet provided, NOT on the question paper.
- Do all the necessary rough work on the question paper.

#### HOW TO USE THE ANSWER SHEET

- Use an ordinary HB pencil.
- Confirm that the answer sheet you have been provided with has the following:

**YOUR ASSESSMENT NUMBER**

**YOUR NAME**

**NAME OF YOUR SCHOOL**

**NAME OF THE SUBJECT**

- Keep the answer sheet clean, dry and DO NOT fold it.
- For each of the questions 1 – 40, four answers are given. The answers are lettered A, B, C and D. In each case, only ONE of the four answers is correct. Choose the correct answer.
- On the answer sheet, mark the correct answer by drawing a dark line inside the box as shown in the example below.

17. Which of these colours brings feelings of warmth and closeness?

- Purple.
- Red.
- Blue.
- Green.

The correct answer is 'B'.

On the answer sheet, in the set of boxes given, draw a dark line inside the box with the letter B printed in it as marked below.

[A]      [B]      [C]      [D]

- The dark line MUST be within the box. DO NOT make any marks outside the boxes.
- For each question, mark ONLY ONE box.

*This paper consists of 7 printed pages.*

*Candidates should check the question paper to ascertain that all the pages are printed as indicated and no questions are missing*

TW-001

CREATIVE ARTS GRADE 9



## PART II SPORTS

15. Study the following image and identify the volleyball skill being executed.



- A. Volleying.                      B. Dig pass.  
C. Overarm service.              D. Chest service.
16. Which of the following is a component of coordination that describes the ability of a person to maintain stability and equilibrium?  
A. Agility.                          B. Balance.  
C. Reaction time.                  D. Strength.
17. The football skill of controlling a ball by stopping it using the body parts allowed in a game of football is known as  
A. kicking                              B. shooting  
C. trapping                             D. dribbling.
18. Adrian was selected to play as the striker in a game of football. Which of the following parts of the body was he restricted from using?  
A. Chest.                                B. Thighs.  
C. Hands.                                D. Feet.
19. Study the following image of a learner playing a game of netball and identify when the skill is executed.



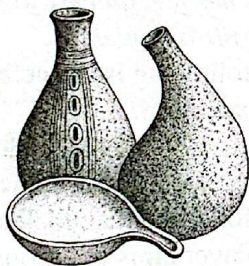
- A. When scoring.  
B. When the teammate is nearby and there is no opponent in sight.  
C. When passing to a teammate who is far and opponents are nearby.  
D. When marking an opponent.
20. Which of the following is a middle-distance race?  
A. 400M                                  B. 200M  
C. 800M                                  D. 600M

21. Which of the following parts of a javelin implement is held during a legal throw?  
A. Metal tip.                          B. Chord grip.  
C. Shaft.                                D. Tail.
22. How many members make a team in a game of volleyball?  
A. 12                                      B. 6  
C. 9                                        D. 11
23. During a netball game Kanini executed the following steps.  
i. *Adopted a ready defensive stance by keeping feet shoulder-width apart, knees slightly bent and eyes focused on both the opponent and the ball.*  
ii. *Maintained a one metre distance from the player with the ball to avoid obstruction.*  
iii. *Positioned her body correctly between the opponent and the direction of play to restrict their movement.*  
iv. *Extended her arms upward and sideways to block passing lanes without making contact.*  
v. *Moved her feet quickly to track and mirror the opponent.*
- Which of the following is the netball skill that she was executing?  
A. Pivoting.                              B. Marking.  
C. Landing.                                D. Dodging.
24. Which of the following handball skills is used when a player aims at scoring a goal?  
A. Flick pass.                            B. Low dribbling.  
C. Jump pass.                             D. Jump shot.
25. During a competitive football match between two schools, the games teacher asked the players to play by the rules and referees to make impartial decisions. Which of the following is a sport value that they were observing?  
A. Fairness.                                B. Equality.  
C. Team building.                        D. Honesty.
26. Which of the following physical activities is used to demonstrate power?  
A. Balloon drills.                        B. Lunges.  
C. Ruler drop test.                       D. Kettlebell swings.
27. Which of the following is considered a foul in a game of netball?  
A. Engaging in physical contact with opponents.  
B. Slightly bending knees when executing passes.

- C. Landing on one foot.
- D. Making quick movements after receiving the ball.

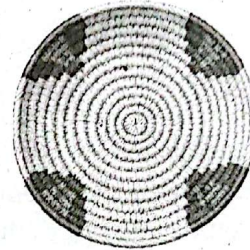
**PART III VISUAL ARTS**

28. Which of the following pairs of colours represents complementary colours?  
 A. Red and purple.  
 B. Green and blue.  
 C. Yellow and orange.  
 D. Red and green.
29. The process of adding a white coloured paint to a yellow coloured paint to make a light yellow paint is known as  
 A. shading                      B. tinting  
 C. washing                      D. diluting.
30. The process of manipulating and making still images to appear as if they are moving is known as  
 A. animation                      B. flipbook  
 C. storytelling                      D. frame.
31. Study the following drawing and identify the drawing technique used to indicate tone.



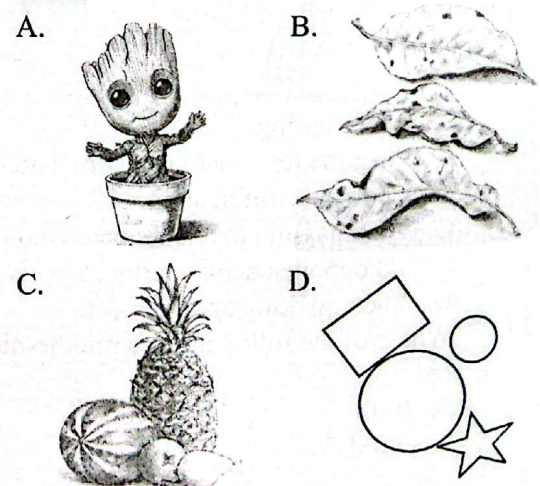
- A. Crosshatching.                      B. Stippling.
  - C. Smudging.                      D. Overlapping.
32. Why is it not advisable to do crayon etching under the sun?  
 A. The wax crayons will dry up quickly making it hard to scratch the surface.  
 B. The black Indian ink will melt.  
 C. The wax crayons will melt.  
 D. The sun will destroy the eyes.
33. A pictorial composition created by sticking different photographs of the same theme to create one photograph is known as  
 A. collage                      B. storyboard  
 C. montage                      D. mosaic.
34. Grade nine learners improvised a javelin implement using a piece of wood. Which of the following is a decorative technique that they used to decorate their javelins?  
 A. Trimming.                      B. Engraving.  
 C. Ironing.                      D. Sun drying.

35. The following are characteristics of 3-D artworks. Which one is **not**?  
 A. Have length, width and height.  
 B. Occupy space.  
 C. Can be viewed from different sides.  
 D. Only have length and width.
36. Study the following image and answer the question that comes after.



Identify the indigenous Kenyan craft technique used to create the item above.

- A. Coil technique.                      B. Carving.
  - C. Applique.                      D. Plaiting.
37. The areas on a drawing that contain the key composition of a drawing are known as  
 A. negative space                      B. positive space  
 C. balanced area                      D. shade.
38. The range between dark areas and light areas on an artwork is known as  
 A. smudging                      B. variation in tone  
 C. texture                      D. value.
39. Why do we use wax crayons in crayon etching picture making technique?  
 A. Create a wax layer that resists ink.  
 B. Create a wax layer that make the image bright and polished.  
 C. Create a wax layer that makes the ink last long.  
 D. Create a wax layer that absorbs the ink.
40. Study the following images and identify one that has applied overlapping element of art.



**SECTION B**

**PART I: PERFORMING ARTS**

41. List three types of imagery used in composing a verse. (3marks)
- a) \_\_\_\_\_
  - b) \_\_\_\_\_
  - c) \_\_\_\_\_
42. List three rhythmic percussion instruments. (3 marks)
- a) \_\_\_\_\_
  - b) \_\_\_\_\_
  - c) \_\_\_\_\_
43. On the space provided below, compose a four-bar rhythmic pattern in  $\frac{3}{4}$  time. (4 marks)

44. Draw a bass staff and indicate ledger lines in the space. (5 marks)

45. Describe the structure of the plot of a story. (5 marks)

46. Imagine that you have been asked to compose a verse. Which two issues in your community will you address? (2 marks)

\_\_\_\_\_

\_\_\_\_\_

**PART II: SPORTS**

47. Briefly describe how the overhead pass is executed in the game of netball. (4 marks)

\_\_\_\_\_

\_\_\_\_\_

\_\_\_\_\_

48. List **two** ways in which a team can score a point in a game of volleyball. (2 marks)

---

---

49. List any **three** middle distance athletes from Kenya who have won medals internationally. (3 marks)

---

---

50. List **three** sports values that we learn through the study and practice of sports. (3 marks)

---

---

---

**OPTIONAL PART. ANSWER EITHER QUESTION 51 OR 52. NOT BOTH**

51. a) Define water treading as applied in swimming. (2 marks)

---

---

b) List **three** leg movements executed in the water treading swimming skill. (3 marks)

---

---

---

c) List **four** safety precautions observed at the swimming pool. (4 marks)

---

---

---

---

52. a) Define indigenous tagging games. (2 marks)

---

---

b) List **three** skills executed in tagging games. (3 marks)

---

---

---

c) List **four** roles of indigenous tagging games to the players. (4 marks)

---

---

---

---

**PART III: VISUAL ARTS**

53. Define colour progression as applied in painting. (2 marks)

---

---

54. On the space provided below, draw an outline of a seascape. (4 marks)

55. Identify any one tool used in weaving. (1 mark)

---

---

56. List three types of beads used in the beading technique. (3 marks)

---

---

---

57. List two techniques applied when making a Kenyan themed bracelet. (2 marks)

---

---

58. List two substances that are used as fixatives in the tie and dye fabric decoration technique. (2 marks)

---

---

59. List two safety precautions observed when decorating fabrics using the tie and dye technique. (3 marks)

---

---

---

---