



TARGETER WINGS

KENYA JUNIOR SCHOOL EDUCATION ASSESSMENT

GRADE 8 - 2026

Wings
001

| | |
|---------------------|--|
| Learner's Name | |
| School Name | |
| Learner's Signature | |

| | |
|-------------------|--|
| Assessment Number | |
| School Code | |
| Date | |

CREATIVE ARTS AND SPORTS (Theory)

TIME: 1 Hour 40 Minutes

INSTRUCTIONS TO LEARNERS

1. Write your **name** and **assessment number** in the spaces provided above.
2. Write the **name and code of your school** in the spaces provided above.
3. Put your **signature** and write the **date** of the assessment in the spaces provided above.
4. This paper consists of **two** sections A and B.
5. Each section has **THREE** parts: **Part I - Performing Arts, Part II - Sports, Part III - Visual Arts.**
6. **Section A** comprises Multiple Choice Questions number: 1 to 20.
7. **Section B** comprises short structured and analysis questions number: 21 to 29.
8. Answer **ALL** the questions in section A on the separate answer sheet provided.
9. Answer **ALL** the questions in section B in the spaces provided on this question paper for

Part I - Performing Arts and Part III - Visual Arts.

10. For **Part II** - Questions 24 and 25 are **COMPULSORY**. Questions 26 and 27 are **OPTIONAL**.
11. Do not remove any page from this question paper.
12. Answer all questions in English.

For official use only

SECTION B

| | | | | | | | | | |
|-------------------|----|----|----|----|----|----|----|----|----|
| Question Number | 21 | 22 | 23 | 24 | 25 | 26 | 27 | 28 | 29 |
| Maximum score | 10 | 4 | 2 | 1 | 2 | 4 | 4 | 4 | 3 |
| Candidate's Score | | | | | | | | | |

SECTION A: MULTIPLE CHOICE QUESTIONS (20 Marks)

Read the instructions carefully.

1. You have been given this question paper and an answer sheet. This section of the question paper consists of **20** multiple-choice questions.
2. Answer **ALL** questions on the answer sheet provided, **NOT** on the question paper.
3. Do all the necessary rough work on the question paper.

HOW TO USE THE ANSWER SHEET

4. Use an ordinary HB pencil.
5. Confirm that the answer sheet you have been provided with has the following:

YOUR ASSESSMENT NUMBER
YOUR NAME
NAME OF YOUR SCHOOL
NAME OF THE SUBJECT

6. Keep the answer sheet clean, dry and **DO NOT** fold it.
7. For each of the questions 1 – 20, four answers are given. The answers are lettered **A, B, C** and **D**. In each case, only **ONE** of the four answers is correct. Choose the **correct** answer.
8. On the answer sheet, mark the correct answer by drawing a **dark line** inside the box as shown in the example below.
17. Which of the following is a warm colour?
A. Green.
B. Orange.
C. Purple.
D. Blue.

The correct answer is 'B'.

On the answer sheet, in the set of boxes given, draw a **dark line** inside the box with the letter **B** printed in it as marked below.

[A] [B] [C] [D]

9. The dark line **MUST** be within the box. **DO NOT** make any marks outside the boxes.
10. For each question, mark **ONLY ONE** box.

This paper consists of 4 printed pages.


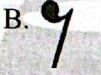


Candidates should check the question paper to ascertain that all the pages are printed as indicated and no questions are missing

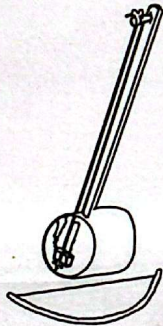
CREATIVE ARTS GRADE 8

TW-001

SECTION A (20marks)

PART I: PERFORMING ARTS

1. Marimba is played by striking the wooden bars using one of the following items. Which one?
A. Mallets. B. Keys.
C. Bats. D. Rhythm sticks.
2. Which of the following is a body percussion?
A. Dancing. B. Gestures.
C. Snapping fingers. D. Diction.
3. Songs that are sung to address the pertinent emerging issues in the society are known as
A. action songs
B. patriotic songs
C. sacred songs
D. topical songs.
4. Which of the following symbols is a rest of a crotchet note?
A.  B. 
C.  D. 
5. The series of interconnected events in a story are known as
A. setting B. characters
C. plot D. theme.
6. Study the following musical instrument and identify the method used to play it.



- A. Bowing. B. Hitting.
C. Shaking. D. Plucking.
7. Music teacher asked grade eight learners to perform a set of music quickly as grade seven learners performed it slowly. Identify the element of music that the teacher was testing.
A. Dynamics. B. Tempo.
C. Texture. D. Melody.
8. The note that starts and ends a major scale is known as
A. tone B. semitone
C. keynote D. accidental.

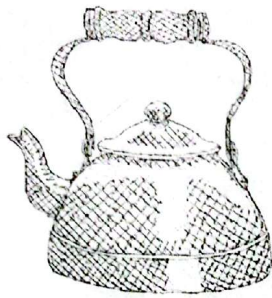
9. Which of the following solfa syllables has the highest pitch?
A. r B. f
C. s D. d'

PART II: SPORTS

10. Which of the following fitness activities demonstrates coordination?
A. Juggling. B. Jogging.
C. Carrying weights. D. Sprinting.
11. The following are the phases of a javelin throw.
i. Approach run
ii. Carry
iii. Release
iv. Cross-over
v. Follow through
Which of the following options represents the correct arrangement of the phases from the first to the last?
A. i, ii, iii, iv, v B. ii, i, iv, iii, v
C. ii, iv, i, iii, v D. ii, iii, iv, i, v
12. Which of the following is not a value that we learn in sports?
A. Winning. B. Team building.
C. Fairness. D. Equality.
13. During a football game, Ryan wanted to bring a moving ball under control to a rest close to him. Which of the following football skills was he likely to use?
A. Dribbling. B. Trapping.
C. Shooting. D. Kicking.
14. During a P.E lesson, the teacher asked the learners to execute the following steps.
i. Approach run
ii. Take off from the ground
iii. Bring the dominant arm (with ball) high and back above the level of the head
iv. Bring the non-dominant arm slightly to the front of the body
v. Bring the dominant arm (with ball) forward and release the ball through wrist action.
vi. Follow through
Which of the following handball skills was being taught?
A. Flick pass.
B. Jump pass.
C. Side pass.
D. High dribble.

PART III: VISUAL ARTS

15. Study the following drawing and identify the drawing technique used to indicate tone.



- A. Crayon etching.
 - B. Stippling.
 - C. Crosshatching.
 - D. Smudging.
16. Grade seven learners were asked to make a javelin implement using a wooden pole. Which of the following is the technique that they used?
- A. Modelling.
 - B. Casting.
 - C. Carving.
 - D. Plaiting.

17. When painting a scenery, the grade eight learners wanted to create a sense of depth and distance. Which of the following colours was used?
- A. Red.
 - B. Orange.
 - C. Black.
 - D. Blue.
18. Which of the following methods is used to decorate items made using the pottery technique?
- A. Firing.
 - B. Applique technique.
 - C. Burnishing..
 - D. Sundrying.
19. Grade eight learners were asked to improvise fixatives used in tie and dye technique. Who among the following used the correct substance?
- A. Marion- water.
 - B. Philemon - salt.
 - C. Liam- vanilla.
 - D. Ashley- wheat flour.
20. The area on a drawing that contains the key element of the drawing is known as
- A. negative space
 - B. center of interest
 - C. positive space
 - D. tonal variation.



SECTION B (30Marks)

PART I: PERFORMING ARTS

21. Imagine that you are an adjudicator during the 2026 drama and film competitions. Design a criteria for analyzing a folk song from a Kenyan community. (10 marks)

22. On the space provided below, group musical notes in $\frac{2}{4}$ time in four bars. (4 marks)

23. Write the French rhythm names of the following notes. (2 marks)

- a)  _____
- b)  _____

PART II: SPORTS

24. How many players are allowed per team to start a game of football in a pitch? (1 mark)

25. List two types of dribbling executed in the game of handball. (2 marks)

- Optional section; attempt either question 26 or 27**
26. a. List two ways of water entry demonstrated in swimming. (2 marks)

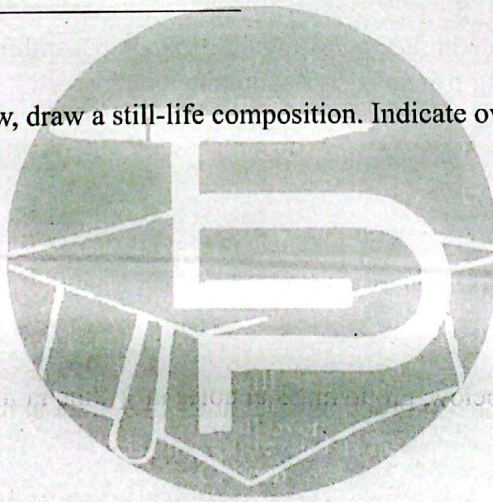
- b. Briefly describe the body position executed in the backstroke swimming technique. (2 marks)

27. a) Define indigenous rope games. (2 marks)

- b) List two activities involved in indigenous rope games. (2 marks)

PART III: VISUAL ARTS

28. On the space provided below, draw a still-life composition. Indicate overlapping of the objects in the drawing. (4 marks)



29. List three types of balance in drawing. (3 marks)

