

TARGETER WINGS

KENYA PRIMARY SCHOOL EDUCATION ASSESSMENT

GRADE 6 - YEAR 2025

INTEGRATED SCIENCE



TIME: 1 hour 40 minutes

INSTRUCTIONS TO CANDIDATES (Please read these instructions carefully)

1. You have been given this question booklet and a separate answer sheet. The question booklet contains 50 questions.
2. Do any necessary rough work in this booklet.
3. When you have chosen your answer, mark it on the **ANSWER SHEET**, not in this question booklet.

HOW TO USE THE ANSWER SHEET

4. Use an ordinary pencil.
5. Confirm that the answer sheet that you have been provided with has the following:
YOUR ASSESSMENT NUMBER
YOUR NAME
NAME OF YOUR SCHOOL
NAME OF SUBJECT
6. Do not make any marks outside the boxes.
7. Keep the sheet as clean as possible and do not fold it.
8. For each of the questions 1 - 50, four choices are given. The choices are lettered **A, B, C** and **D**. In each case, only **ONE** of the four choices is correct. Choose the **correct** answer from the choices.
9. On the answer sheet, the correct answer is to be shown by drawing a **dark line** inside the box in which the letter you have chosen is written.

Example

In the Question Booklet:

17. Which one is **not** a routine practice in rearing of small domestic animals?
- A. Watering
 - B. Beheading
 - C. Feeding
 - D. Sanitation

The correct answer is **B**.

On the Answer Sheet:

In the set of boxes numbered 17, draw a **dark line** inside the box with the letter **B** printed in it as indicated below.

14. [A] [B] [C] [D]

15. [A] [B] [C] [D]

16. [A] [B] [C] [D]

17. [A] [**B**] [C] [D]

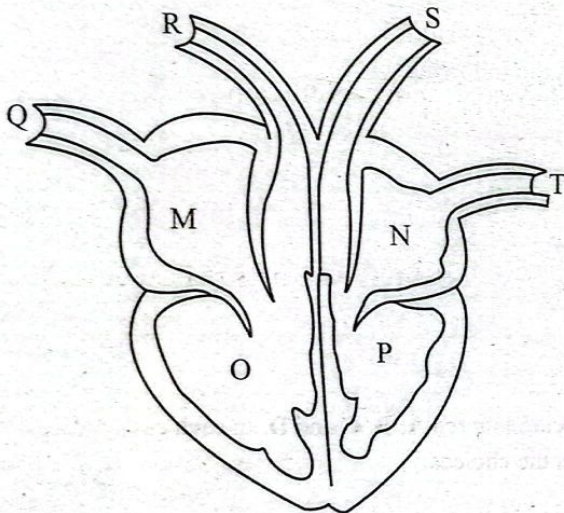
10. Your **dark line** **MUST** be within the box.
11. For each question, **ONLY ONE** box is to be marked in each set of four boxes.

This question paper consists of 7 printed pages

SCIENCE AND TECHNOLOGY

- Which one of the following is not true about fungi?
 - Used in fermentation.
 - Used in making medicine.
 - Produce flowers.
 - Some can be grown for food.
- Which one of the following is **not** an example of fungi?
 - Liverworts
 - Mushroom
 - Mould
 - Puffball

The diagram below shows a human heart. Use it to answer question 3 - 4

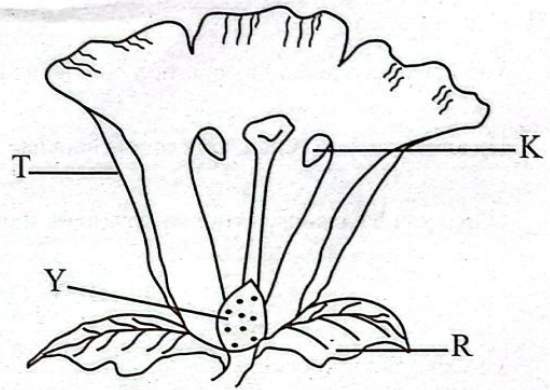


- Which blood vessel carries blood to all parts of the body?

A. Q	B. R
C. S	D. T
- Which chamber of the heart pumps deoxygenated blood?

A. M	B. N
C. O	D. P
- Which of the following small animals consists of invertebrates only?
 - Crabs and chicken
 - Octopus and lizard
 - Crocodile and millipede
 - Flea and snail

- Which of the following is a flowering plants?
 - Fern
 - Sisal
 - Cyress
 - Moss
- The diagram below shows parts of a flower.



Which part is **correctly** matched with its function?

Part	Function
A. K	Produce female sex cells.
B. T	Protects the inner parts.
C. R	Attracts insects
D. Y	Produces sex cells.

- Three of the following are characteristics of mammals. Which one is **not**?
 - They have backbone.
 - They all give birth.
 - They have mammary glands.
 - They breathe by means of lungs.
- In human breathing system, it is important to breathe through the nose because the nose helps in
 - allowing movement of air in and out of lungs.
 - exchange of gases.
 - passage of air to the lungs.
 - cleaning the air.

10. The following are signs and symptoms of a certain conditions and diseases of the breathing system.

i) High fever

ii) Shortness of breath.

iii) Body and muscles ache.

iv) Pain in the chest.

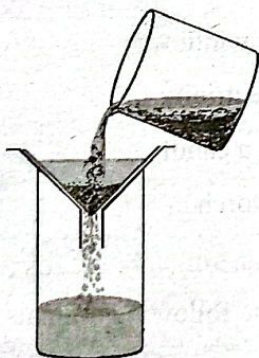
The disease described above is

- A. Covid- 19 B. Cough
C. Allergy D. Asthma

11. Which of the following consists of heterogeneous mixture?

- A. Water and milk
B. Kerosene and oil
C. Sugar and water
D. Flour and water

12. The diagram below shows a method used by learners to separate mixtures in school.



This method is called

- A. decantation
B. sieving
C. filtering
D. picking

13. When making a homemade filter, what is the right use of charcoal paste?

- A. To hold the materials on the filter.
B. To remove water colour.
C. To remove small particles.
D. To kill germs.

14. Pupils were grouping materials as floaters and sinkers. Which of the lists given consists of floaters only?

- A. Stones, maize seeds, bottle top
B. Cork, feathers, rubber
C. Dry wood, rubber, coin
D. Marble, cork, bottle top

15. During a practical lesson to investigate factors affecting floating, learners placed bottle top made of metal on the surface of water. They found it floating. Which factor makes the bottle top to float?

- A. Size of the bottle top.
B. Type of material.
C. Shape of the bottle top.
D. Size and shape of the bottle top.

16. Mrs. Olima intends to separate a mixture of maize and chaff. Which is the best method to use?

- A. Winnowing
B. Picking
C. Sieving
D. Separating funnel

17. Learners were asked by their class teacher to name ways in which they can take care of their domestic animal. Which of the following learners gave the **correct** answer?

- A. Joyce - Playing with the animal daily.
- B. Abdi - Giving them food and water.
- C. Sheila - Allowing them to roam in the compound freely.
- D. Wafula - Locking them in house.

18. Which of the following is a way of maintaining digestive system?

- A. Eating a lot of food in the morning.
- B. Avoiding eating vegetables.
- C. Drinking a lot of water.
- D. Eating sugary food.

19. Learners discussed characteristics of matter.

Which one of the following characteristics is common in all the three states of matter?

- A. They have definite volume
- B. They have definite shape.
- C. They have definite size.
- D. They have definite mass.

20. Grade 5 learners wanted to make a model of the human breathing system. They used the following materials. Which material represented the trachea?

- A. Balloon
- B. Straw
- C. Plastic bottle
- D. Rubber band

21. Which of the following is an example of non-decomposable waste?

- A. Banana peeling.
- B. Food left overs.
- C. Plastic bottles.
- D. Wood chippings

22. Three of the following are ways of conserving water in the environment **except**

- A. washing utensils with running water.
- B. using a basin to take a shower.
- C. covering crops with dry grass.
- D. using a cup of water for brushing teeth.

23. Which of the following statements explains how friction affects object?

- A. It makes the object move faster.
- B. It slows moving object.
- C. It changes the size of objects.
- D. It increases their weight.

24. Which of the following is **likely** to light a house naturally?

- A. Opening windows
- B. Using electricity
- C. Lighting a candle
- D. Using a torch

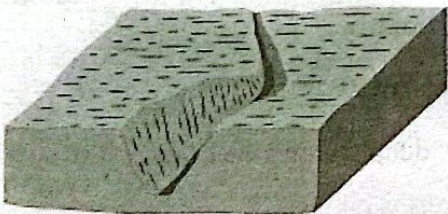
25. Which of the following animals breathe by means of lungs and lay eggs?

- A. Cows and fish
- B. Chicken and snake
- C. Dove and bat
- D. Toad and fish

AGRICULTURE

26. All these are better ways of living with wild animals around our farms **except**
- A. using safe traps
 - B. using innovation sounds
 - C. poisoning
 - D. fencing
27. Which is the **best** method to use to control splash erosion?
- A. Constructing gabions
 - B. Building terraces
 - C. Planting trees
 - D. Planting grass
28. Learners were asked to give examples of small wild animals that destroy crops. They named the following. Which one was **wrong**?
- A. Birds
 - B. Squirrel
 - C. Monkey
 - D. Mongoose
29. While preparing a shallow pit, which of the following is the first step?
- A. Digging a trench.
 - B. Levelling the soil.
 - C. Marking the area.
 - D. Adding fertilizer.

30. Learners observed the structure shown below.



The type of soil erosion observed is

- A. rill erosion
- B. splash erosion
- C. sheet erosion
- D. gully erosion

31. After preparing a seedbed learners spread dry grass on the soil. What is the **main** role of the grass in preventing soil erosion?
- A. To trap water.
 - B. To increase soil fertility.
 - C. To stabilize soil.
 - D. To absorb heat.
32. Grade 5 learners wanted to construct organic waste pit for soil improvement. They placed the following materials in the pit **except**
- A. food remains
 - B. plastic polythene papers
 - C. animal waste
 - D. plant remains
33. The diagram shown below was used by learners during construction of organic waste. The garden tool is called



- A. shovel
 - B. trowel
 - C. jembe
 - D. hoe
34. Three of the following are ways of conserving water for household gardening. Which one is **not**?
- A. Shading
 - B. Mulching
 - C. Irrigating
 - D. Cover cropping

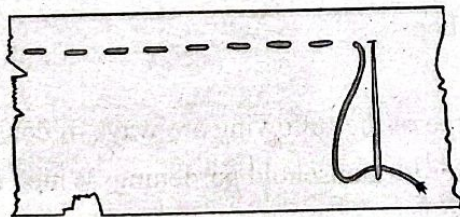
35. Learners wanted to remove infected parts of a crop. This practice is called
- A. weeding
 - B. pruning
 - C. mulching
 - D. shading

36. Which one of the following crops helps to prevent our bodies from diseases?
- A. Sukuma wiki
 - B. Sweet potato
 - C. Groundnuts
 - D. Sugarcane

37. Pupils observed a neighbour with something that appeared like a swollen throat. The condition the neighbour was suffering from is called
- A. kwashiorkor
 - B. marasmus
 - C. goitre
 - D. anaemia

38. Below are examples of pulses. Which one is **not**?
- A. Cowpeas
 - B. Green grams
 - C. Beans
 - D. Sorghum

39. The diagram below shows a stitch that was done by learners during a practical lesson.



- The stitch is called
- A. back stitch
 - B. running stitch
 - C. seam
 - D. back and running stitch

40. Three of the following are importance of laundry work for hygiene purpose. Which one is **not**?

- A. To prevent spread of skin diseases.
- B. To make the clothes to look smart and last longer.
- C. To improve personal hygiene.
- D. To prevent the clothes from drying.

41. Carol used the tool below when making stitches.



It is called

- A. needle
- B. hook
- C. pin
- D. nail

42. During a practical lesson learners wanted to cook fish. They placed the fish on frying pan and on top of fire. They added some salt and small amount of oil and heated it until it turned brown. The method of cooking done was
- A. dry fat frying
 - B. boiling
 - C. shallow frying
 - D. deep frying

43. Which of the following domestic animals is **correctly** matched with its product or use?

Animal	Product or use
A. Rabbit	To guard home
B. Camel	Milk and meat
C. Dog	Source of manure
D. Cat	Carrying heavy goods

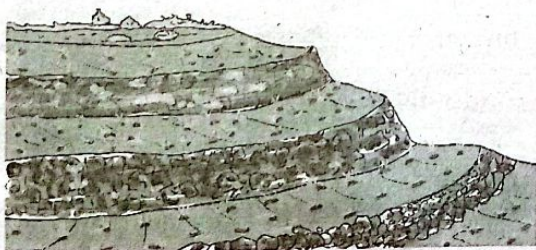
44. Which is the **best** method to use when cooking chips?

- A. Shallow frying
- B. Deep frying
- C. Dry fat frying
- D. Boiling

45. Learners were asked reasons why it is important to preserve cereals and pulses. Which among the following is **not** a correct reason.

- A. Ensures food security.
- B. Improves taste of the food.
- C. Increases cost of buying foods.
- D. Prevents food spoilage.

46. The diagram below shows a practice that was constructed to conserve soil.



This practice is called

- A. terraces
- B. cover cropping
- C. shading
- D. gabions

47. Grade 5 learners had a project of constructing vertical and horizontal gardens. They would collect the following materials **except**

- A. plastic bottles
- B. old tyres
- C. sacks
- D. metallic pipes

48. Which of the following foods can help to prevent kwashiorkor?

- A. Potato
- B. Cassava
- C. Peas
- D. Guava

49. Which of the following materials helps to protect the fingers when making samples of stitches?

- A. Ruler
- B. Needle
- C. Thimble
- D. Thread

50. Olivia wanted to clean their glass window.

Which of the following would be the **last** step to follow?

- A. Use clean clothe to remove the dust.
- B. Rinse with clean warm water.
- C. Use warm soapy water and soft cloth to rub.
- D. Use an old newspaper to dry the glass.