

KENYA JUNIOR SCHOOL EDUCATION ASSESSMENT



GRADE 9 MARKING SCHEME - YEAR 2025

<p>1. $19^{\circ}\text{C} - 7^{\circ}\text{C}$ $= 12^{\circ}\text{C}$</p>	<p>6. 0.00375 3.75×10^{-3}</p>	<p>11. $180 - 171 = 9$ $\frac{19}{100} \times \frac{5}{100} = 5\%$ $\frac{180}{20} = 9$</p>
<p>2. $1\frac{1}{8}\text{kg} + 2\frac{1}{6}\text{kg} - 2\frac{5}{6}\text{kg}$ $(1 + 2 - 2) + \frac{1}{8} + \frac{1}{6} - \frac{5}{6}$ $1 + \frac{3+4-20}{24}$ $0 \quad 244 \quad 24$ $\frac{1}{1} + \frac{7-20}{24}$ $= \frac{31-20}{24}$ $= \frac{11}{24}\text{kg}$</p>	<p>7. $2.5 \times 5.1 \div 1.7 - 3.9 + 7.5$ Bodmas $51 \times 10 = 3$ 17×10 $(2.5 \times 3) - 3.9 + 7.5$ $7.5 - 3.9 + 7.5$ $(7.5 + 7.5) - 3.9$ $15.0 - 3.9$ $= 11.1$</p>	<p>12. 5 people = 14 days 7 people = ? $\frac{5 \text{ pple} \times 14 \text{ days}}{7 \text{ pple}}$ $= 10 \text{ days}$</p>
<p>3. $2\frac{2}{5} \div 3\frac{15}{16} \times 1\frac{1}{8}$ Bodmas $\left[\frac{12}{35} \div \frac{63}{16}\right] \times \frac{9}{8}$ $\frac{12}{5} \times \frac{16}{63} \times \frac{9}{8}$ $= \frac{12}{35}$</p>	<p>8. 2443000m^2</p> <p>9. $173 \mid = 27161$ $250 \mid = ?$ $\begin{array}{r} 157 \\ 250 \times 27161 \\ \hline 173 \end{array}$ Ksh.39250 Ans C</p>	<p>13. $\frac{3r - 125}{4xr - 16 \times 5}$ $\frac{3(r-4s)}{4x(r-4s)}$ $= \frac{3}{4x}$</p>
<p>4. A</p>	<p>10. C : S : G 1 : 2 : 4 $S = \frac{2}{7} = 900\text{kg}$ $C = \frac{1}{7} = ?$</p>	<p>14. If $a=5, b=7$ and $c=2$ What is the value of $18a + 6b^2$ $c(b+8)$ $18 \times 5 + 6 \times 7 \times 7$ $2(7+8)$ $90 + 294$ $2(15)$ $= 384$ 30 $= 12.8$ or $12\frac{4}{5}$</p>
<p>5. Let x be $0.40\dot{5}$ $x = 0.405405$ $10x = 4.05405$ $100x = 40.5405$ $1000x = 405.405$ $1000x = 405.405$ $- x = 0.405$ <hr/>$999x = 405.000$ $x = \frac{405}{999} = \frac{15}{37}$</p>	<p>$\frac{1}{7} \times 900\text{kg} \times \frac{7}{2}$ 1 Cement = 450kg Gravel $\frac{2}{7} = 900\text{kg}$ $\frac{4}{7} = ?$ $\frac{2}{7} \times 900\text{kg} \times \frac{7}{2}$ 1 Gravel = 1800kg</p>	<p>15. $2(3s+2t = 3900)$ $3(2s+5t = 8100)$ $6s + 15t = 24300$ $- 6s + 4t = 7800$ <hr/>$14t = 16500$ $14t = 11$ $t = 1500$ $3s + 2(1500) = 3900$ $3s + 3000 = 3900$ $3s = 3900 - 3000$ $3s = 900$ $s = 300$ 1 Shirt = Sh.300 1 pair of trouser = Sh.1500</p>

$$16. P = \frac{1}{2}\pi D + \frac{1}{2}\pi d \times 2$$

$$\frac{1}{2} \times \frac{11}{7} \times 28 + \frac{1}{2} \times \frac{11}{7} \times 14 \times 2$$

$$44 + 44$$

$$P = 88\text{cm}$$

$$17. \frac{O}{360} \pi r^2 = A$$

$$\frac{1}{360} \times \frac{11}{7} \times r^2 = 19.25$$

$$\frac{11r^2}{28} = 19\frac{1}{4}$$

$$\frac{28}{11} \times \frac{11}{28} r^2 = \frac{77}{4} \times \frac{28}{11}$$

$$r^2 = 49$$

$$r = 7\text{cm}$$

18. A

$$19. P = \text{Sh.}90000$$

$$R = 9\%$$

$$I = \text{Sh.}24300$$

$$\text{Time (T)} = ?$$

$$T = \frac{I \times 100}{PR}$$

$$\frac{24300 \times 100}{90000 \times 9}$$

$$= \frac{243}{81} = 3 \text{ years}$$

$$20. \text{H.P.P} = \text{Dep} + \text{M.I}$$

$$\text{M.I} = \text{H.P.P} - \text{Dep}$$

$$= 24000 - 10000$$

$$= 14000$$

7

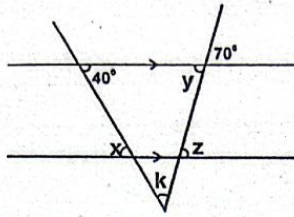
$$\text{Each Instalment} = \text{Sh.}2000$$

$$21. \sqrt{\frac{30}{49}} = \sqrt{\frac{961}{49}} = \frac{31}{7}$$

$$= \frac{31}{7}$$

$$= 4\frac{3}{7}$$

22.



$$y = 70^\circ$$

Vertically opp

$\angle y = \angle z = 70^\circ$ alternate angles

$x = 40^\circ$ alternate angles

$$40 + 70 + k = 180$$

$$k = 180 - 110$$

$$k = 70^\circ$$

23. 1 cm rep 5km

$$1\text{km} = 100\,000\text{cm}$$

$$5\text{km} = ?$$

$$1\text{cm rep } 500\,000\text{cm}$$

$$1:500\,000$$

$$24. \text{Mean} = \frac{\text{Sum of } q + y}{\text{No. of } q + y}$$

$$\frac{21003 + 15510 + 23105 + 15207 + 12335}{5}$$

$$= \frac{89160}{5}$$

$$\text{Mean} = 17832$$

25. Solution

$$\text{No. Trials} = 120$$

$$\text{No. of outcomes} = 47$$

$$\text{Probability of 3 appearing,}$$

$$P(3) = \frac{\text{No. of outcome}}{\text{Total no. of outcome}}$$

$$= \frac{47}{120}$$

ENGLISH

Task 1

- It is involved watching the news every night for five days.
- weather report
- a red line that indicates low pressure
- To record or fill out while they watched
- A

2. (a). They have wide, soft padded feet that keeps them from sinking

(b). D

(c). That it is able to store water

(d). Odd/strange/unusual

3. GRAMMAR

a). curable

b). imagination

c). correction

4.

a). taken

b). C

c). given

d). D

5.

(a). between

(b). on

(c). through

(d). B

6.

a). A little

b). few

c). a few

7.

a). Besides

b). or

c). A

(d). In

8. Oral Literature and poetry

(a). He boasted/he talked too much

(b). boastful/proud/disrespectful

(c). He could not control his mouth, he was use to taking endlessly

(d). pride comes before a fall

9. Poem

(a). Environmental conservation

(b). three

(c). more trees should be planted and preserved.

(d). clean/green sorrow/tomorrow sink/think

10.

(a). Chao and I (the winter)

(b). They were schoolmates/classmates

(c). Quarrelled/Confronted each other

(d). Chao's strange way of speaking her/his mind

KISWAHILI

1. Ndani ya afisi ya ushauri nasaha

2. kazi imekuwa nyingi

3. Huzuni

4. vijana hawapaswi kujihusisha na mapenzi kwani huathiri masomo

5. Hakiki jibu

6. ?

7. ?

8. ambapo

9. mmoja

10. umri

11. popote

12. wala

13. I-ZI

14. Mti uliopandwa ni hii

15. pole pole ndio mwendo

16. pia

17. kujitia hatarini

18. Hakiki jibu

19. Kiswahili

20. shemeji

FASIHI

21. mcheshi

22. Hakiki jibu




23. kudhihakiwa/kuchezewa/
kufanya kejeli
24. nyumbani
25. umaskini

SOCIAL STUDIES

1. Career
Is an occupation undertaken for a significant period
2. D
3. a). Museology- is the practice of organizing and managing museums.
b). Cartography - is the study and practice of making maps which involves research among others
c). Urban planning - is the process of designing and managing land and resources in an urban area
4. Agriculture, Trade, The Nile River, Architecture, Bureaucracy
5. Humiliation, Forced labour, Lack of rights, Ethnical fragmentation
6. B
7. - Climate change
- Migration hence borrowing of culture
- Foraging
- Domestication of animals
8. - Theres order
- Identity
- They are many of different types
9. - Unreliable weather
- Language barrier
- Insecurity
10. Negotiation, Litigation, Dialogue
11. Open answer
12. C
13. - Recognize the territory that king Leopard claimed as his private property
- Recognize some existing territorial claims in different parts of Africa
- Set up away for Europeans to claim and annex territory in Africa
14. Open answer
15. - Sunrise and sunset
- Plane travel
- Lunar eclipse
- Ships on the horizon
16. B
17. Open answer
18. Jomo Kenyatta
Raila Odinga
19. - Admission of new learners
- Accounting officer of the school finances
- Takes notes in the board of management committee meeting
- Supervise day to day school activities

20. Tilapia, Trout, Daga, Mud fish
21. Air, water, railway

INTEGRATED SCIENCE

1. Conical flask, syringe, beaker, burette, pipette
2. (a).  (b).  (c). 
3. - Picking
- Use of magnet
- Sublimation
- Sieving
4. Volume - m^3
Density - kgm^3
Area - m^2
5. Cellwall, cytoplasm, vacuole
6. powder, foam, water, wet chemical, carbon dioxide
7. a). Multiplying eyepiece lens magnification and objective lens magnification
b).

X6	X8	X48
X5	X7	X35
X5	X4	X20
X7	X4	X28
8. (a). Volume - has fixed volume
(b). Shape - has definite shape
(c). Ability to flow - does not flow
d). Compressibility - incompressible
9. (a). A
(b). Particles move from a highly concentrated region
10. Heat of thermal energy
Electrical energy
Sound energy
Mechanical energy
11. A
12. Magnetism

AGRICULTURE

1. Meat, manure, eggs
2. D
3. Glue, soil, plant material, plasticine, carbon
4. B
5. occasion, age, gender, number of people, health status
6. B
7. - Beheading
- Defeathering
- Singeing
- Cleaning
- Cutting into pieces
- Packaging
- Providing proper ventilation
8. feeder, waterers, fold itself, water
9. a). C
(b). feeders, waterers, fold itself, water
10. - Weather forecasting
- Input supply
- Extension services
- Banking services
11. B

12. - Fencing
- Planting grass around the water pan to control soil erosion
- Remove any foreign material in water
13. - Work in a well lit area
- Do not use your teeth to cut your yarn
- Do not sit close to each other as you knit
14. causes soil erosion
destruction of crops
15. The wick irrigation garden
Hanging gardens
Raised beds
Food robe garden

PRE-TECHNICAL

1. - poultry
- rubber
- papier mache
- mud
2. clays, additives, water, stone, oxides, binders
3. Tool A - scraper
Tool B - Secateur
Tool C - Snip
Tool D - Saw
4. D
5. - Urgency of the message
- Audience
- Purpose of communication
- Nature of the message
- Confidentiality
6. a). Keyboard - Keyboard input
b). Scanner - Images and photographs
c). Microphone - Sound
7. Book keeping
8. - Assess the situation, check for responsiveness
Position the victim, loosen tight clothing, monitor breathing, provide fresh air, call for emergency help
9. Malware
Phishing
Data beachers
Cyberbullying
Fake websites and online scams
10. - Market manipulation
- Insider trading
- Misleading financial statements
- Bait and switch
- Failure to disclose conflicts of interest
- Tax evasion
- Hoarding
11. - Immediate feed back is needed
- Where complex or sensitive topics are involved
- When persuasion and influence is needed
- When crisis management is required

12. - Doing research and educating themselves
 - Knowing their rights
 - Using secure payment methods
 - Using consumer reviews and ratings
 - Using consumer protection agencies

13. Land - rent

Labor - Wages/salaries
 Entrepreneurship - Profit
 Capital - Interest/profit

14. B

15. A

CREATIVE ARTS & SPORTS

1. a). Sports - is any activity involving physical or mental effort combined with skills.

b). Creative Arts - is a description of various artistic activities that allow performers to use their imaginations, creativity and express ideas through a variety of medium to pass a message to the audience

c). Music - is a collection of coordinated sound or sounds

2. - Creates job opportunities
 - Earn income
 - Earns foreign exchange
 - Stimulates growth of economy

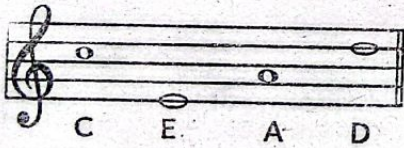
3. Open answers

4. Visual arts

- Appreciated through sense of sight
- Appreciated for their emotional power

Performing Arts

- Involves performance or presentation to the audience
- Can be done live to an audience or recorded for future us



6. - Break monotony
 - Make lesson interesting
 - for entertainment purpose
7. Asking oral question
 Repetition
 Tonal variation
 Dramatizing
8. C
9. To beat an opponent
10. D

11. - Helps to establish the time period and setting of the play
 - Reveals the personality of each character
 - Creates beauty
 - Helps the audience to understand the character
 - Helps to tell the story
 - Identify the community

12. Open answer

13. - Create sense of pride and accomplishment
 - Boost learners self-esteem
 - Humanize the space
 - For beauty

14. Theme - This is the message
 Character - This is a person or individual taking part in the play or drama

15. Drafter
 Event planners
 Web designer
 Photographers

16. C

C.R.E

1. - In both accounts God is the sole creator
 - In both God created both male and female
 - In both human beings are special
 - In both God provides for human beings

2. Unity, respect, love, empathy
 3. Romans, colossians, Hebrews, Philemon

4. B

5. Jesus Christ told his disciples to go with Him across the lake. They had then left the crowd and go into the boat in which Jesus was already sitting Jesus got asleep when suddenly a heavy wind blew. His disciples woke him up and He commanded the wind to be calm and the waves to be still.

6. D

7. - Deforestation
 - Burning bushes
 - Overgrazing
 - Pollution
 - Improper disposal of waste
8. - Prayer helps us to have peace in our lives
 - Prayer helps us to intercede for our needs
 - Prayer helps us to know more about God
 - Prayer encourages Christians to confess and ask for forgiveness

9. - Stewardship of the earth
 - Name of all animals
 - Taking care of the creation

10. - Repenting their sins
 - Practising social justice
 - Being contented with what they have

11. Self awareness,
 Effective communication,
 Stress management,
 Resilience, self respect

12. Led to separation from God
 Loss of original innocence
 Curse open creation
 Exile from Eden

13. C

I.R.E

1. Ayah - Smallest division in the Qur'an made up of one or more words and marked by a number at the end

Juzuu - Is division of the Qur'an into thirty equal parts

2. - Teaches us on Halal and Haram
 - Guides mankind on how to worship Allah (SWT)

- Teaches mankind on unseen knowledge
- Teaches mankind on how to make dua
- Guides us on morality and shapes our character

3. Hadith Qudsy were revelation to the prophet (SAW) through a dream or inspiration but not part of Quran

While hadith Nabow are sayings and actions of the prophet SAW

Hadith Qudsi teachings deeds with spiritual and ethical subject while Nabow guides Muslims on all aspects of life

4. Children live on the streets
 Children may lack basic needs
 Children may drop out of school

Conflicts of two families

5. a). Tawaaf - Going round the kaabaly seven times

b). Saayl- running seven times between swafa and marwa

c). Ihram - His putting on two pieces of white clothes

6. - Promoting justice in business
 Helping to prevent suspicious in business

- Promoting trust among business partners
- Being used as evidence to solve conflicts

7. Right to own property
 Right to education
 Right to work and earn a living
 Right to inherit

8. Edul Adhha take piece on 10th Dhulhijja while Eidul Fitr takes place on 1st Shawwal